

NEW WORKS BY KRISTINE BALLARD

# FRAGMATISM

– FRESH FROM THE TROPICS –

5-26 OCTOBER 2017



EXHIBITION CATALOGUE

**ART★SHINE**  
space & gallery

NEW WORKS BY KRISTINE BALLARD

# FRAGMATISM

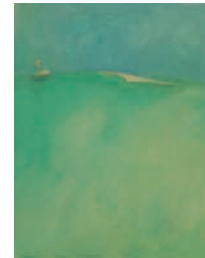
– FRESH FROM THE TROPICS –

Escape into the tropical world of colour with Ballard's radiant landscapes. Inspired by the diversity of island environments throughout Fiji, this show celebrates the resilient and regenerative forces of nature. Travel from the reef to the rainforest to uncover fresh new colourscapes. Using her unique painting style called *Fragmatism*® Ballard presents a floating world where subjects merge and mutate through a kaleidoscope of shape and colour. Nature's transient beauty is revealed and asks you to take a fresh new look.



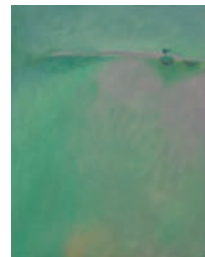
**Meridian Tides**

Oil on Canvas  
122 x 152cm  
\$5200



**Morning Horizon**

Oil on Timber Panel  
25.5 x 20.5cm  
\$375



**Emerald Afternoon**

Oil on Timber Panel  
25.5 x 20.5cm  
\$375



*Fragmatism*® was born in the streets of Barcelona in Spain. Investigating both Picasso and Gaudi's creative evolution sparked a need to articulate Ballard's own artistic focus.

A passion for strong colour and light evolved into a style she calls *Fragmatism*®.

## SO WHAT IS FRAGMATISM?

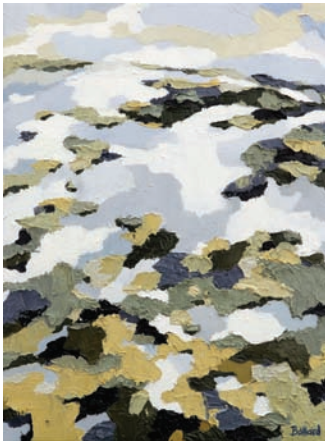
This is a style of painting. The subject matter is based on the concept that our perceptions are often a compilation of reality and experience. Objects are deconstructed and merge into one another. Like memories, images float, dissolve and mutate. Beauty is often camouflaged.

Colour also plays a vital role in the style. Following the Fauve painters and their quest for emotionally charged colour, seeking the perfect combination of hues to 'capture a moment' will always be a driving force throughout this style.

*Fragmatism*® is a uniting of influences and admirations. The style was inspired by the cubists deconstruction process, the orphic explorations of the Fauves, and the Nabi's desire to synthesise nature and aesthetics. Using this style, of heightened colour and morphic forms, the ambition is to connect and respond to all the colours that life has to offer.



Transparent hues,  
rising tides and  
sinking lands



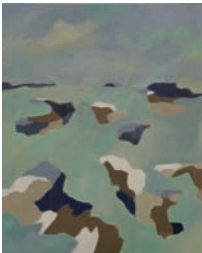
**Tides Out**  
Oil on Canvas  
40.5 x 30.5cm  
\$675



**Silver Skies**  
Oil on Canvas  
40.5 x 30.5cm  
\$675



**Coral Sands**  
Oil on Timber Panel  
25.5 x 20.5cm  
\$375



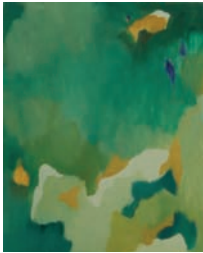
**Rocky Tide swell**  
Oil on Timber Panel  
25.5 x 20.5cm  
\$375



**Linckia's View**  
Oil on Timber Panel  
25.5 x 20.5cm  
\$375



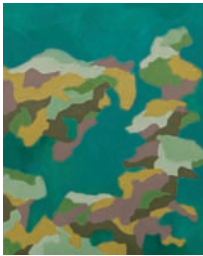
**Aquamarine Dream**  
Oil on Canvas  
122 x 61cm  
\$1950



**Underwater  
Playground 1**  
Oil on Timber Panel  
25.5 x 20.5cm  
\$375



**Underwater  
Playground 2**  
Oil on Timber Panel  
25.5 x 20.5cm  
\$375



**Coral Cluster**  
Oil on Timber Panel  
25.5 x 20.5cm  
\$375



**Coral Castle**  
Oil on Timber Panel  
25.5 x 20.5cm  
\$375



**Coral Pipes**  
Oil on Timber Panel  
25.5 x 20.5cm  
\$375

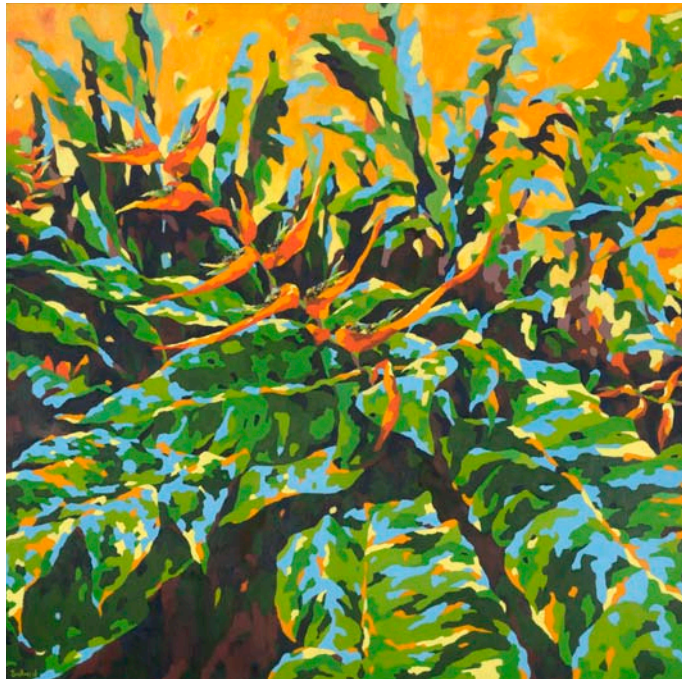


Topaz seas and  
aquamarine  
waters.  
Oceanic  
adventures  
linger below  
the surface.



# Tropic Life

Juicy hillsides,  
fruity foliage  
sprout under  
citrus skies



**Tropic Splendour**

Oil on Canvas

Image size 101cm x 101cm (40 x 40")

Timber oak frame. Framed size 105cm x 105cm

\$3250



**Palm Grove**

Oil on Canvas

122 x 61cm

\$1950



**Looking for Gauguin**

Oil on Canvas

40.5 x 30.5cm

\$675



**Talking to Gauguin**

Oil on Canvas

40.5 x 30.5cm

\$675



**Banana bend rise**

Oil on Timber Panel

25.5 x 20.5cm

\$375

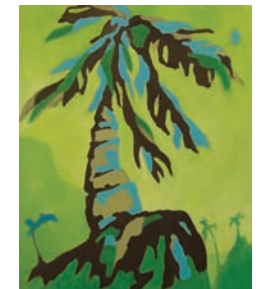


**Mango Mountain**

Oil on Timber Panel

25.5 x 20.5cm

\$375



**Coconut King**

Oil on Timber Panel

25.5 x 20.5cm

\$375

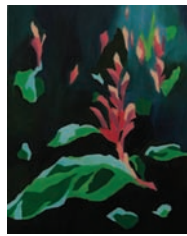


# Rainforest

Canopy shadows,  
glossy greens  
and sunlight dances

## Rainforest Ravine

Oil on Canvas  
122 x 61cm  
\$1950



## Sunshine Ginger

Oil on Timber Panel  
25.5 x 20.5cm  
\$375



## Shady Ginger

Oil on Timber Panel  
25.5 x 20.5cm  
\$375



## Tropic Pond

Oil on Canvas  
122 x 61cm  
\$1950

# Pond life

Friendly frogs,  
indigo blues,  
tropical blooms



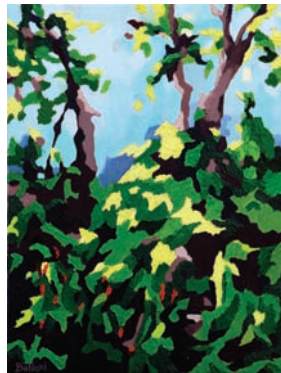
## Rainforest Blooms

Oil on Canvas  
40.5 x 30.5cm  
\$675



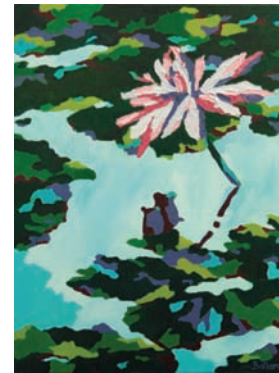
## Rainforest Trellis

Oil on Canvas  
40.5 x 30.5cm  
\$675



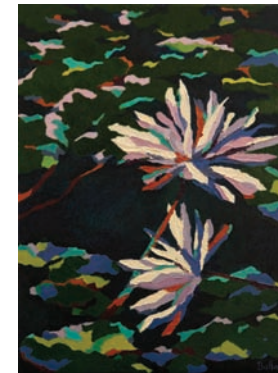
## Wild Chilli

Oil on Canvas  
40.5 x 30.5cm  
\$675



## Lilyside Ponder

Oil on Canvas  
40.5 x 30.5cm  
\$675



## Pond Blooms

Oil on Canvas  
40.5 x 30.5cm  
\$675

**LIMITED EDITION PRINTS**

Acknowledging our ever changing environment, this series of prints pays homage to the rising tides and tropical weather experienced throughout the tropic isles of Fiji.

Each title available as Limited Edition Giclée Print  
(Edition of 50 only).  
Printed on 300gsm cotton rag fine art paper.  
Each signed and numbered.

Image size  
37.5 x 26.5cm  
Print only \$80

With Frame  
42.5 x 52.5cm  
\$150



**Rising Tide**



**Tidal Rise 1**



**Tidal Rise 2**



**Tidal Rise 3**

## KRISTINE BALLARD



**ARTIST - CREATOR - ART EDUCATOR**

Kristine Ballard creates her art in her garden studio based in Sydney with the assistance of her art critic, Sketch the cat.

Specialising in vibrant colour, Ballard's subjects focus on still life and landscapes. Connections to the environment and the objects that fill them, are themes that continue to inspire her creative practice. Translating the vibrancy of life through colour is her life long quest.

She has exhibited widely both nationally and internationally. Completing art residencies in New York, Venice and Fiji has played an important part of her art practice.

Kristine also an experienced art tutor delivering art functions and classes on an individual and group basis as well as running specialised classes and workshops.

For more information on art and classes go to  
[www.kristineballard.com](http://www.kristineballard.com)

or contact:

EMAIL: [kballard@kristineballard.com](mailto:kballard@kristineballard.com)  
FACEBOOK: [facebook.com/kristine.ballard.3](https://www.facebook.com/kristine.ballard.3)  
INSTAGRAM: <https://www.instagram.com/kristineballard/>  
TWITTER: [Kristine Ballard@ArtistBallard](https://twitter.com/KristineBallard)

Kristine is also available for commissions, workshops, art demonstrations and art talks.

# BALLARD



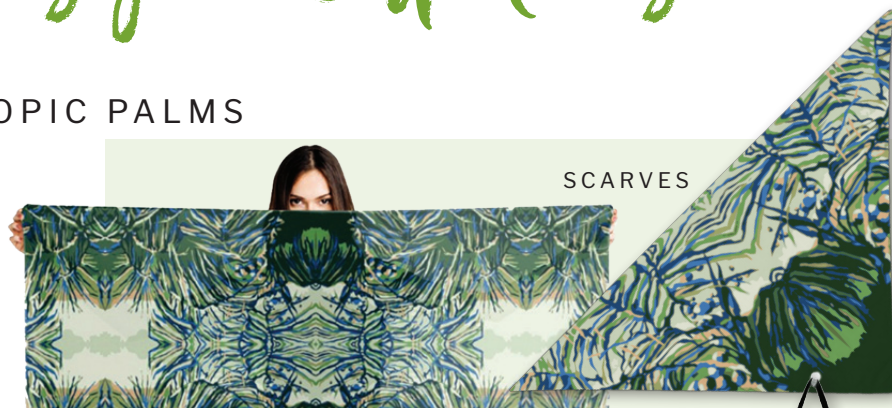
# Designer Collections

NEW DESIGNER COLLECTIONS BY KRISTINE BALLARD

Transforming fine art into designer wearables and decorator pieces.

**BALLARD**  
ARTWARE

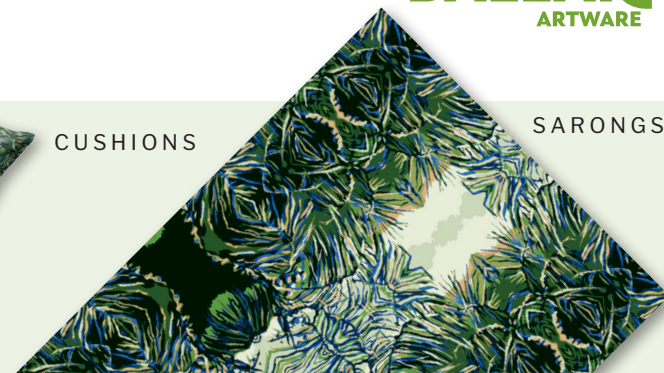
## TROPIC PALMS



SCARVES



CUSHIONS



SARONGS

## TROPIC PARADISE

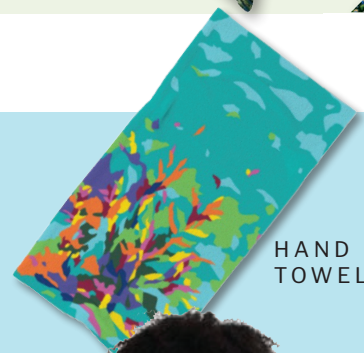


MUGS

POUCHES



BAGS



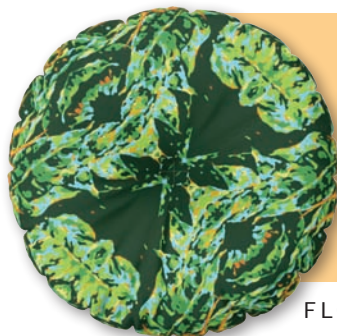
HAND  
TOWELS



CUSHIONS



## TROPIC TOTEM



FLOOR PILLOWS



MUGS



BEACH TOWELS



BACK PACKS



APPAREL



**BALLARD**  
ARTWEAR



## Business Coaching For Artists

ArtSHINE is a specialised coaching program for artists, artisans, crafters, designers, fashion labels, and all professionals working in the creative communities.

Working extensively with clients, and also drawing upon the knowledge of experienced industry professionals, ArtSHINE has worked to create and develop the coaching programs as part of our commitment to support the development of business and entrepreneurial skills of Australian artists, artisans, and associated creative communities.

Attention All Artists, Designers, Crafters and creative professionals

Working full time but wanting to make the transition to make a living for yourself?

- \* Thinking about painting full time as an artist?
- \* Ready to take that next step in your graphic design business?
- \* Need to create financial success so that you can pursue your real passion?

ArtSHINE is here to provide you with all the skills, experience, and support you need to make your artistic dreams reality.

Do what you love to do...honour your creative spirit... and let it "Shine"!

ArtSHINE is all about defining, creating and pursuing your authentic life path.

MAKE TOMORROW TODAY!



ArtSHINE Gallery is a platform dedicated to emerging and established artists. We work with artists, showcase their talents and help them connect with established and emerging collectors.

### Our mission statements are:

*To create a platform to help artists launch their art careers.*

*To help artists to connect with established and emerging collectors.*

*To present an eclectic, diverse selection of art in our gallery and online gallery.*

Come and visit our gallery in the inner city village of Chippendale; Sydney's creative precinct. You'll find hundreds of paintings on display covering every style of art imaginable.







**JOIN A**

# Colourplay Workshop



## YOUR FACILITATOR

*Kristine Ballard is a practicing artist and arts educator. She exhibits and teaches in Australia and internationally.*

*The originator of the Fragmatism® style, she will help you develop and nurture your very own abstraction style.*

**BALLARD**

Do you love colour? Do you want to create some art?

Have fun creating your own artworks. This workshop is for anyone who loves colour but is convinced they have no talent or skill. Using a range of art mediums you will learn how to take your favourite colours and let them help you create an abstracted artwork that reflects your unique personality.

*No skills required, just enthusiasm and a love for colour.*

## WHAT'S INCLUDED

- Fully guided creativity art class
- All equipment provided
- Easy and fun exercises to cultivate your own colour palette
- Easy ways to create contemporary designs and artwork
- Your own watercolour artwork
- Your own canvas artwork
- Morning Tea
- Inspiring ideas to continue developing your own style

*Held at the ArtSHINE Gallery*

## NEXT WORKSHOP - FRAGMENTED LANDSCAPES

**SUNDAY 8 OCTOBER 9AM - 1PM** Book via eventbrite or get the flyer in gallery.

**\$145pp**

Includes all equipment and morning tea

NEW WORKSHOPS COMING IN 2018. DON'T MISS OUT ON THE NEWS. SIGN UP TO THE ARTSHINE MAILING LIST.

**ART★SHINE**  
space & gallery

3 BLACKFRIARS ST, CHIPPENDALE

PH: (02) 9698 9156 E: GALLERY@ARTSHINE.COM.AU

WWW.ARTSHINEGALLERY.COM