

NEW ARTWORKS BY ANTHONY VAN LAM

"ESPY"



EXHIBITION CATALOGUE

01 - 29 AUGUST 2017

★ArtSHINE  
gallery



# NEW ARTWORKS BY ANTHONY VAN LAM

## "ESPY"



*"Save Myself!"*

### ABOUT THE EXHIBITION

***"ESPY" - Meaning "catch sight and to observe!"***

This is Anthony's second exhibition, he wants to create all things that he sees as beautiful and meaningful in his works and share his message "ESPY!".

A message making time to enjoy what is around you! It's only meaningful if you Observe !

What's in front of you may not be around! Life is short! We need to protect and preserve. All things depend on each other to flourish.





**Pink Cymbidium Orchid**

Watercolour on Arches paper

Framed: 27.5 x 22.5 cm

**\$165**



**Cherry Blossom**

Watercolour on Arches paper

Framed: 27.5 x 22.5 cm

**\$165**



**R.P.B**

Watercolour on Arches paper

Framed: 27.5 x 22.5 cm

**\$165**

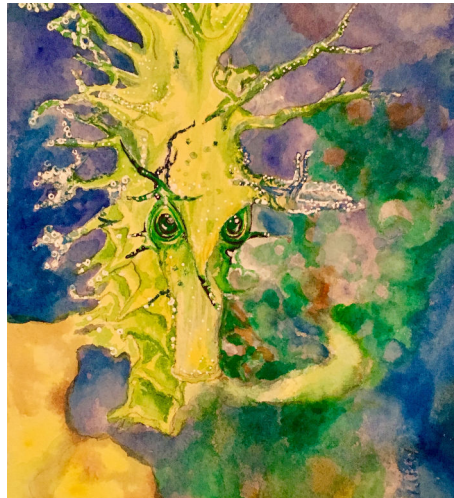


**Welcoming changes but go with the flow**

Watercolour on Arches paper

Framed: 27.5 x 22.5 cm

**\$165**

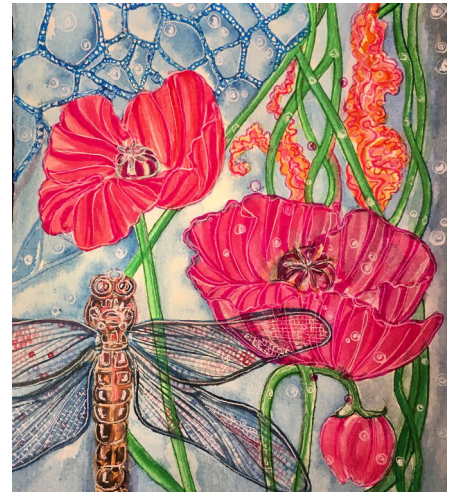


**Keeping a watchful eye!**

Watercolour on Arches paper

Framed: 27.5 x 22.5 cm

**\$165**



**B.S.R**

Watercolour on Arches paper

Framed: 27.5 x 22.5 cm

**\$165**



**It's ok to let others shine!**

Watercolour on Arches paper

Framed: 36.0 x 28.0 cm

**\$200**



**The Interaction between  
dragonflies and Chinese lanterns**

Watercolour on Arches paper

Framed: 36.0 x 28.0 cm

**\$200**



**Observing Gouldian**

Watercolour on Arches paper

Framed: 36.0 x 28.0 cm

**\$200**





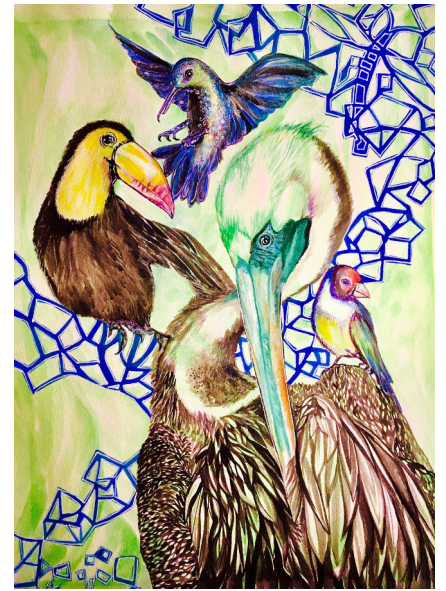
### **Toxic beauty of a Lion Fish!**

Watercolour on Arches paper  
Framed: 36.0 x 28.0 cm  
**\$200**



### **Becoming a Merman**

Watercolour on Arches paper  
Framed: 36.0 x 28.0 cm  
**\$200**



### **A birds life!**

Watercolour on Arches paper  
Framed: 53.0 x 43.0 cm  
**\$250**



### **A Change is going to come**

Watercolour on Arches paper  
Framed: 53.0 x 43.0 cm  
**\$250**



### **Eleonor Orchid**

Watercolour and pen  
Framed: 42.0 x 32.0 cm  
**\$150**



### **Gathering**

Watercolour and pen  
Framed: 42.0 x 32.0 cm  
**\$150**



### **Observing Gouldian**

Ceramic Mug  
**\$25**



### **A Change is going to come**

Ceramic Mug  
**\$25**



### **The Interaction between dragonflies and Chinese lanterns**

Ceramic Mug  
**\$25**





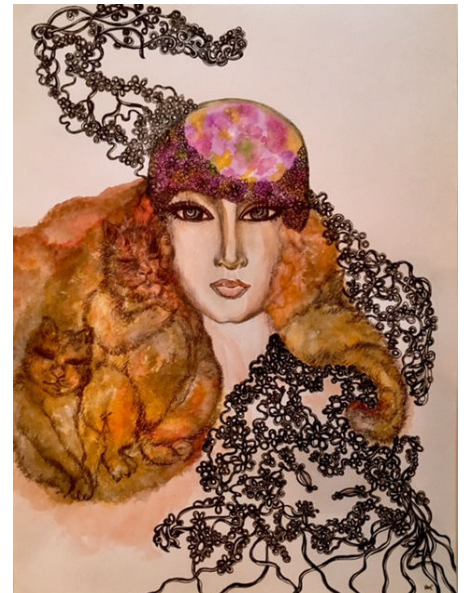
### **Mostly Macky**

Watercolour and pen  
Framed: 42.0 x 32.0 cm  
**\$150**



### **Living within Paradise**

Watercolour and pen  
Framed: 42.0 x 32.0 cm  
**\$150**



### **One purrfect day!**

Watercolour and pen  
Framed: 42.0 x 32.0 cm  
**\$150**



### **Reflections**

Watercolour on paper  
Framed: 42.0 x 32.0 cm  
**\$150**

### **Mel Mel enlightenment**

Watercolour on paper  
Framed: 42.0 x 32.0 cm  
**\$150**



## **Digital Print On Canvases with with Embelishment**



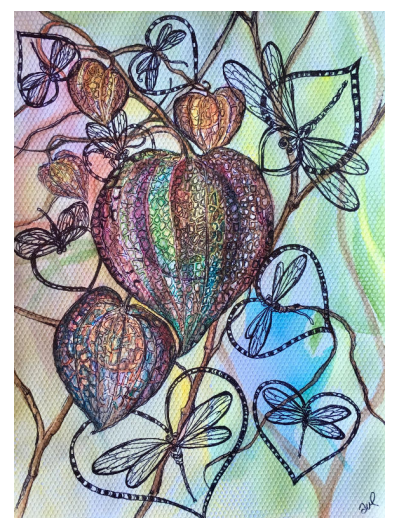
### **Observing Gouldian**

Digital Print On Canvas with  
Embellishment  
Canvas Size: 51.0 x 40.5 cm  
**\$300**



### **Keeping a watchful eye!**

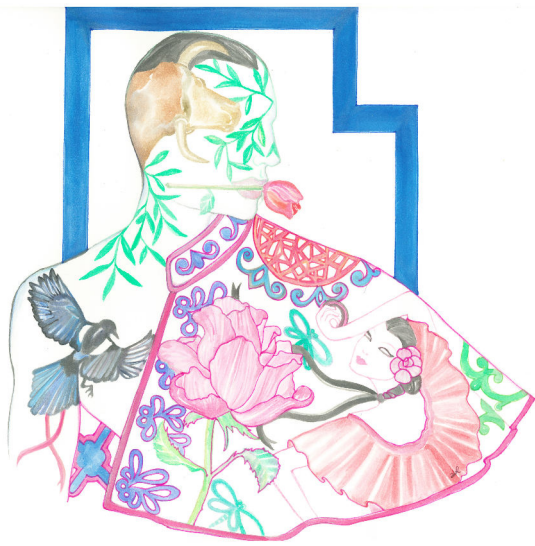
Digital Print On Canvas with  
Embellishment  
Canvas Size: 51.0 x 40.5 cm  
**\$300**



### **Keeping a watchful eye!**

Digital Print On Canvas with  
Embellishment  
Canvas Size: 51.0 x 40.5 cm  
**\$300**





### **Bullfighter's Song**

Watercolour on Arches paper

Framed: 53.0 x 53.0 cm

**\$250**



### **Reminiscing**

Watercolour on Arches paper

Framed: 53.0 x 53.0 cm

**\$250**



### **Delicate Pleasures**

Watercolour on Arches paper

Framed: 53.0 x 53.0 cm

**\$250**



### **I'll Remember You**

Watercolour on Arches paper

Framed: 53.0 x 53.0 cm

**\$250**



### **Observing Gouldian**

Ceramic Mug

**\$25**



### **A Change is going to come**

Ceramic Mug

**\$25**



### **Keeping a watchful eye!**

Ceramic Mug

**\$25**



### **Reminiscing**

Ceramic Mug

**\$25**

**ESPY | ANTHONY VAN LAM**



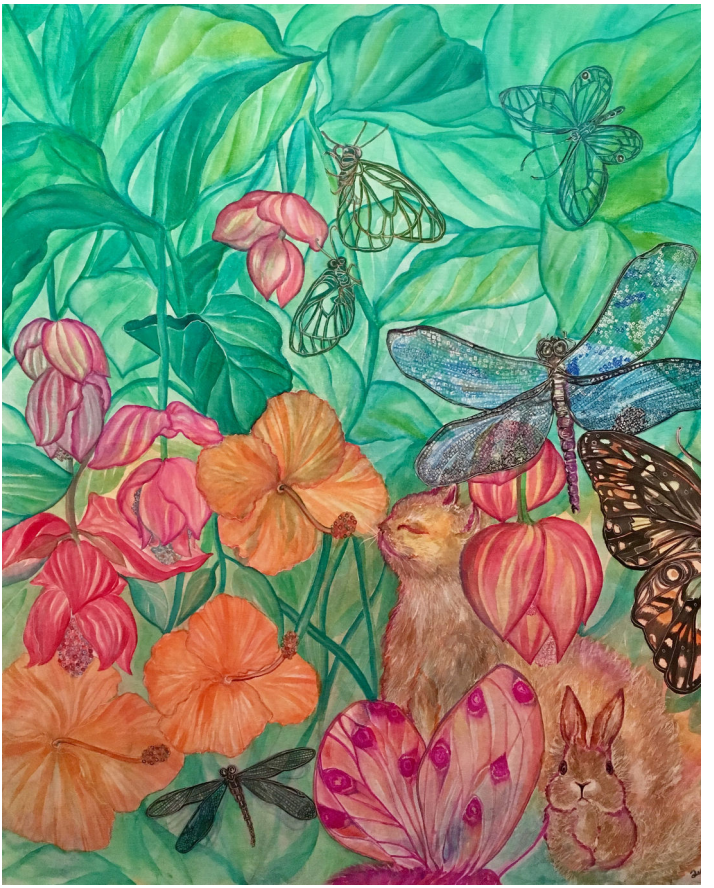


**Trials and tribulations**

Watercolour On Canvas

Framed: 61.0 x 51.0 cm

**\$450**



**Keeping up Medinella Magnifica!**

Watercolour On Canvas

Framed: 61.0 x 51.0 cm

**\$450**



**Save Myself!**

Mixed Media

Framed: 61.0 x 61.0 cm

**\$300**

**Save Myself!**

Watercolour on canvas

Framed: 91.5 x 76.0 cm

**\$600**



# "ESPY"

## ARTIST'S LONG LUNCH Sunday 20 AUGUST 2017



Please join us for an artist's long lunch with Anthony Van Lam.

Members and friends of the ArtSHINE Gallery are invited to join the Anthony as we enjoy 'ESPY' Exhibition and a three course long lunch.

This Long Lunch is a supplementary event to celebrate Anthony's solo exhibition 'ESPY' launching at the ArtSHINE Gallery housed at CoSydney CoWorking + Enterprise Accelerator in the City of Sydney's Chippendale Creative Precinct on Saturday 5 August 2017.

With an inspired 'ESPY' three course lunch created especially for the event by restaurateurs and culinary artisans Barefoot & Hungry, Anthony will share his recollections and inspirations with you as we relax, dine together, enjoy his works, and hear first hand about Anthony's art practice and passion for painting.





# ABOUT THE ARTIST

## ANTHONY VAN LAM

The stylistic, expressive paintings of Australian artist Anthony Van Lam are as tranquil and magical as they are profound. Working in mix media on canvas or on paper, he paints from a range of subject matter to explore how lines, colours, organic shapes, flowers, animals and surface patterns intersect in unique ways to create form. With a background in fashion design, the artist has an excellent sense of composition and is able to place objects expertly in the picture plane, finding new meanings in familiar subject by isolating them and manipulating forms in terms of scale, color, and shadow.

Known for his bold and colourful designs in fashion, Anthony's paintings reveal his true passion for flowers that are immediately eye-catching. His current works capture exotic water lilies in a perfume lake. Elegantly depicted, they offer tranquility, calmness and allow you to leave your stresses behind when you look at one of his artworks.

Perhaps the hallmark of Anthony Van Lam's work is his remarkable use of color and the way he is able to manipulate light and shadow to bring his work to an entirely new level.

Indeed, there is an ethereal component to his work, a sense of the surreal. In the end, these engaging paintings encourage us to find the magical in the everyday.





# ★ArtSHINE

## industries

### Accelerator + Launch Pad

We're Australia's Creative Industries Enterprise Acceleration Platform + Launchpad.

We identify, advance, fund, and aid the development of commercially minded and innovation Creative Industries Professionals.

ArtSHINE industries incorporates CoSydney Coworking, the ArtSHINE Gallery, the ArtSHINE Agency, and the ArtSHINE Coffee House.



*"Money for art's sake.  
Interest free loans to buy art.  
Take your art home and  
pay for it later."*

## Big Thanks To Our Sponsors



## Our Partners







## Business Coaching For Artists

ArtSHINE is a specialised coaching program for artists, artisans, crafters, designers, fashion labels, and all professionals working in the creative communities.

Working extensively with clients, and also drawing upon the knowledge of experienced industry professionals, ArtSHINE has worked to create and develop the coaching programs as part of our commitment to support the development of business and entrepreneurial skills of Australian artists, artisans, and associated creative communities.

Attention All Artists, Designers, Crafters and creative professionals

Working full time but wanting to make the transition to make a living for yourself?

- \* Thinking about painting full time as an artist?
- \* Ready to take that next step in your graphic design business?
- \* Need to create financial success so that you can pursue your real passion?

ArtSHINE is here to provide you with all the skills, experience, and support you need to make your artistic dreams reality.

Do what you love to do...honour your creative spirit... and let it “Shine”!

ArtSHINE is all about defining, creating and pursuing your authentic life path.

MAKE TOMORROW TODAY!



# ★ArtSHINE gallery

ArtSHINE Gallery is a platform dedicated to emerging and established artists. We work with artists, showcase their talents and help them connect with established and emerging collectors.

## **Our mission statements are:**

*To create a platform to help artists launch their art careers.*

*To help artists to connect with established and emerging collectors.*

*To present an eclectic, diverse selection of art in our gallery and online gallery.*

Come and visit our gallery in the inner city village of Chippendale; Sydney's creative precinct. You'll find hundreds of paintings on display covering every style of art imaginable.

