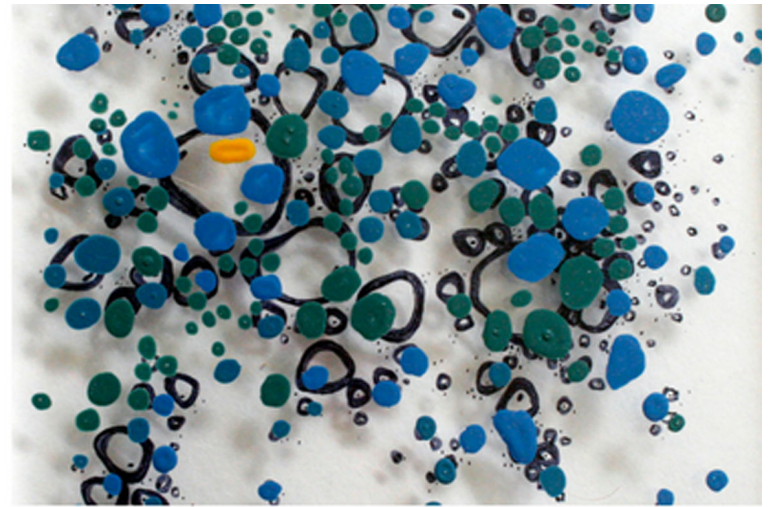


"SUSPICIOUS BEGINNINGS"

- Adam Graham - David Howell -
- Julie Pozdeev - Olga Nowicka -

05 - 19 JUNE 2017



EXHIBITION CATALOGUE

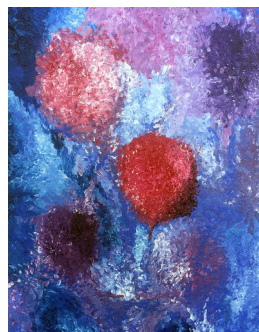
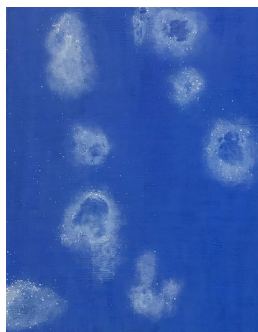
★ArtSHINE
gallery

NEW ARTWORKS

"SUSPICIOUS BEGINNINGS"

EXHIBITING ARTISTS

- Adam Graham - David Howell -
- Julie Pozdeev - Olga Nowicka -



ABOUT THE EXHIBITION

This collaborative exhibition features paintings, photographs and sculptures by :

Adam Graham
David Howell
Julie Pozdeev
Olga Nowicka

It explores the artists' beginnings and their original inspiration. Designed to celebrate their early artistic influences, and explore how they shaped them to become the artists they are today.

Come along to Suspicious Beginnings and experience the impact of this art for yourself.

SUSPICIOUS BEGINNINGS | GROUP EXHIBITION

Adam Graham

ABOUT THE ARTIST



"Motivated by the idea that with a little imagination an inanimate object such as steel or raw timber could be turned into something creative and alluring to the eye; Adam had discovered 3D art."

Adam Graham grew up in Gomshall, Surrey – a small village in South East England. The first art experience he remembers as a boy was being fascinated by an ink painting his Uncle David had drawn which hung in his spare bedroom.

The extremely detailed image was based on fantasy and incorporated dragons, woodlands and castles; themes which naturally appealed to a child. Adam soon found himself experimenting with his own doodles in pencil at first, and later fine ink as he found his feet capturing more detail. Adam also incorporates other materials such as hardwood and gathering inspiration from everyday object with interesting curves and shapes with the aim of challenging himself with new ideas and subtle differences in each piece.



Idle Hand
Steel, lacquer
30 x 25 cm
\$585



Crab In A Well
Steel & lacquer
20 x 26 cm
\$485



Foodfinger
Steel & Polished Perspex
21 x 18 cm
\$320



Cow Skull
Steel & Polished Cow Horns
32 x 48 cm
\$1950



Redback
Steel, and Timber
15 x 9 cm
\$260

David Howell

ABOUT THE ARTIST



"David has been called an interventionist, but not by himself."

David arrived from the West in 2001 to study sculpture at COFA. Working with metal, concrete and other sundry things that fired his imagination he went on to cast his own car from ferro cement.

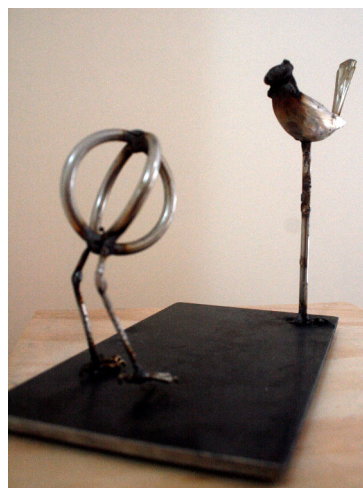
Subsequently winning the Whites Wires sculpture prize he was provided with some more materials useful in the production of masonry artworks. This led to the production of some other large works which ended up in exhibitions such as the McClelland sculpture survey, Montalto sculpture prize.



Out of place
Steel, lacquer
127 x 50 x 53 cm
\$1,100



Still Life with Nest
stainless steel, wire
and mild steel.
40x 30x 20 cm
\$550



Unformed
stainless steel and
mild steel.
20x 20x 10 cm
\$200



Contrast
stainless steel and
mild steel.
30x 25x 20 cm
POA



Evolutionary dead end
Steel, lacquer & MDF
30 x 46 x 52 cm
\$600

Third Watch
stainless steel and mild steel.
20x 20x 15 cm
\$200



Julie Pozdeev

ABOUT THE ARTIST



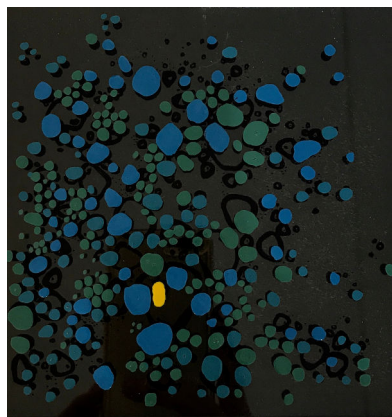
"Julie is a self-proclaimed dabbler in painting and drawing. She is forever sketching in work meetings."

Julie enjoys the smell of paint and moving it around the canvas and Acrylic sheets. She tends to use geography, biology, and God as the main themes in her art. Julie gets excited about maps, travelling, neurology, and camping.



Interaction (Friend)

Framed: Acrylic paint on acrylic sheet
16.5x 16.5 cm
\$200



Diffusion

Framed: Acrylic paint on acrylic sheet
16.5 x 16.5 cm
\$200



Introspection

Framed: Acrylic paint on acrylic sheet, 30 x 30 cm
\$250



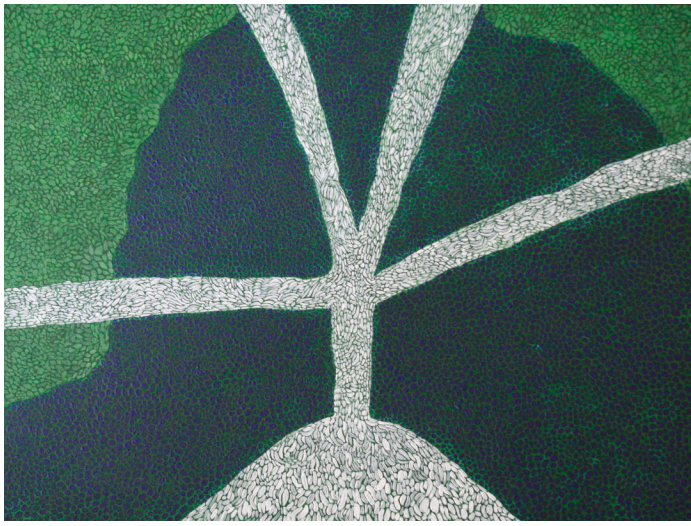
Linear Regression

Acrylic on Canvas
30 x 40 cm
\$200



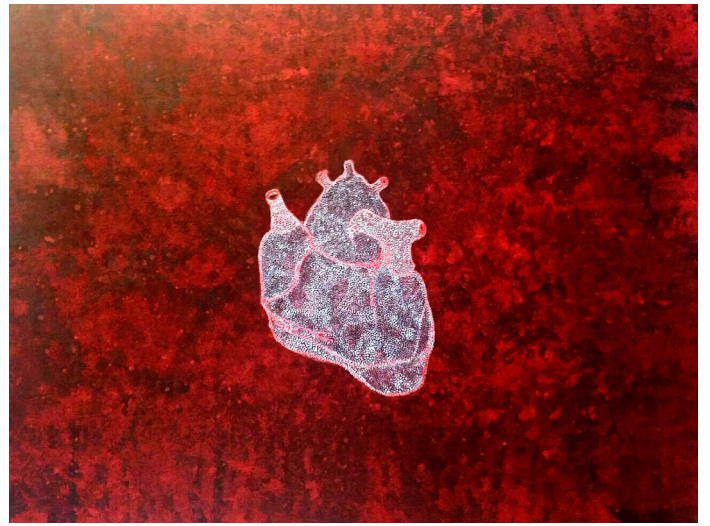
Colony

Framed: Acrylic paint on acrylic sheet, 30 x 30 cm
\$250



Grow

Acrylic on canvas, 48 x 38 cm
\$200



Emote

Acrylic on canvas, 48 x 38 cm
\$200

MEET OUR SPONSORS

BELLE & GRACIE

- BOTANICAL -

nakedwines

VINOMMOFO

UNITED BY WINE.

SUSPICIOUS BEGINNINGS | GROUP EXHIBITION

Olga Nowicka

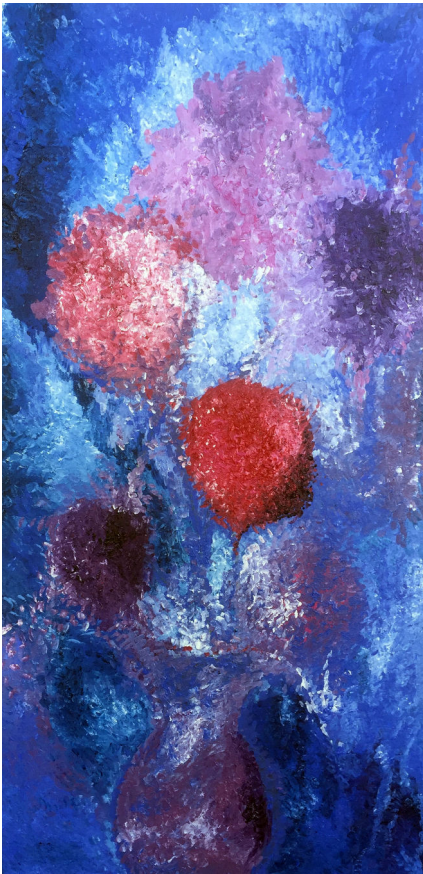
ABOUT THE ARTIST



"Olga loves colours and experimenting with them."

All her artworks were painted using only the primary colours & Acrylic paint. Olga's paintings are mainly abstract. She is inspired by everyday life and memories.

Olga's photography is inspired by the wildlife carers Australia wide and the work they do. Especially WIRES.



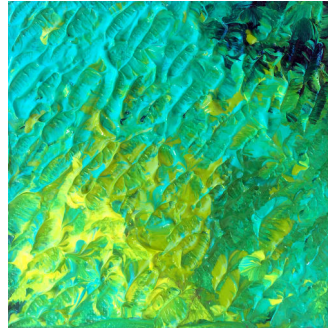
1985

Gouache on canvas
120 x 61 cm
\$270



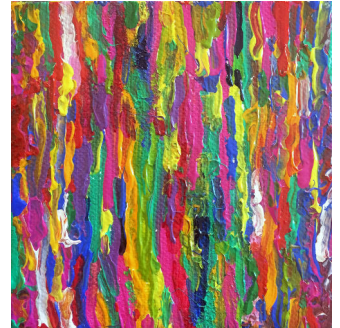
1995

Gouache on canvas
10 x 10 cm
\$45



1991

Gouache on canvas
10 x 10 cm
\$45



1994

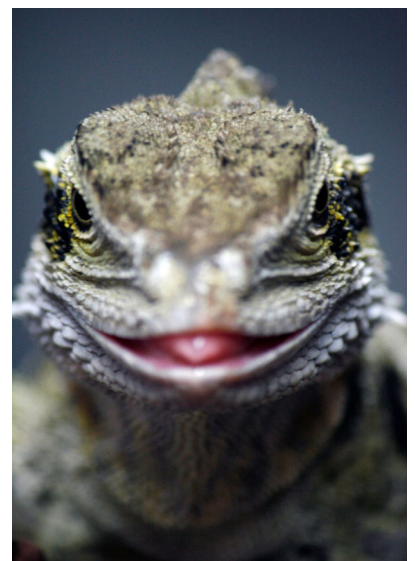
Gouache on canvas
10 x 10 cm
\$45

The 90's - Set of 3 For \$120



Harry

Photography
Framed: 40 x 30 cm
\$90



Betty

Photography
Framed: 40 x 30 cm
\$90

SUSPICIOUS BEGINNINGS | GROUP EXHIBITION

Olga Nowicka

HANDMADE JEWELLERY

"I've always dreamed of doing pottery. This jewellery collection is just the beginning. Each piece is handmade and unique. No two pieces are the same. Made of quality porcelain. The pieces with silver are made with real silver and/ or mother of pearls."



Silver Motif \$38



Circle Clove \$38



Mother Of Pearl Shell \$38



Blue Motif \$30



Silver Circle \$38



**Porcelain Silver &
Mother of Pearl \$120**



Porcelain Bead \$65



Porcelain Round \$50



Porcelain Brooch \$15



Business Coaching For Artists

ArtSHINE is a specialised coaching program for artists, artisans, crafters, designers, fashion labels, and all professionals working in the creative communities.

Working extensively with clients, and also drawing upon the knowledge of experienced industry professionals, ArtSHINE has worked to create and develop the coaching programs as part of our commitment to support the development of business and entrepreneurial skills of Australian artists, artisans, and associated creative communities.

Attention All Artists, Designers, Crafters and creative professionals

Working full time but wanting to make the transition to make a living for yourself?

- * Thinking about painting full time as an artist?
- * Ready to take that next step in your graphic design business?
- * Need to create financial success so that you can pursue your real passion?

ArtSHINE is here to provide you with all the skills, experience, and support you need to make your artistic dreams reality.

Do what you love to do...honour your creative spirit... and let it "Shine"!

ArtSHINE is all about defining, creating and pursuing your authentic life path.

MAKE TOMORROW TODAY!

SUSPICIOUS BEGINNINGS | GROUP EXHIBITION



LAUNCH PAD + ACCELERATOR APPLICATIONS NOW OPEN

ArtSHINE industries Launch Pad & Accelerator for Creative Industries Professionals

Take your enterprise or creative practice to the next level

ArtSHINE industries is Australia's independent Creative Industries Enterprise Acceleration Platform + Launch Pad identifying, advancing, and funding commercially minded and innovative Creative Industries Professionals who focus on art, craft, artisanal making, design, fashion, entertainment, photography, music, writing, film & television, digital technology, and games & interactive content. authentic life path.

Launch Pad

The ArtSHINE Launch Pad incubation program supports Creative Industries Professionals and entrepreneurs launching new creative ventures or those transitioning from full time employment to self employment.

In addition to the standard program inclusions Launch Pad participants are eligible for:

- ✓ Your work or product featured as part of an ArtSHINE representation at a domestic show (i.e. art fair, game design expo, or relevant industry trade show / exhibition) or an ArtSHINE gallery Sydney exhibition package (as applicable).

Commercialisation Accelerator

ArtSHINE pioneered the concept of 'Business LifeStyle' in Australia. We have a real world, practical approach to commercialisation in the Creative Industries, and thus a new approach to entrepreneurial education, creative practice, entrepreneurship, and self leadership. As an Accelerator participant focus on taking your creative practice to the next commercial level. Establish a viable product with real-world relevance.

In addition to the standard program inclusions Launch Pad participants are eligible for:

- ✓ Your work or product featured as part of an ArtSHINE delegation at an international show (i.e. trade fair, licensing fair, game design expo, or international art show)

Over the 24-week program period Launch Pad participants scope and define income generating activities, clarify purpose, and define success measures. While Accelerator participants explore lean-startup methodologies and best practices, establish viable product, and establish systems and processes.

SUSPICIOUS BEGINNINGS | GROUP EXHIBITION



*"Money for art's sake.
Interest free loans to buy art.
Take your art home and
pay for it later."*

Big Thanks To Our Sponnors



naked wines



Anthony & Irina
Barefoot 'n' Hungry



Our Partners



CHIPPENDALE
CREATIVE
PRĒCINCT!

★ArtSHINE
gallery

SUSPICIOUS BEGINNINGS | GROUP EXHIBITION

★ArtSHINE gallery

ArtSHINE Gallery is a platform dedicated to emerging and established artists. We work with artists, showcase their talents and help them connect with established and emerging collectors.

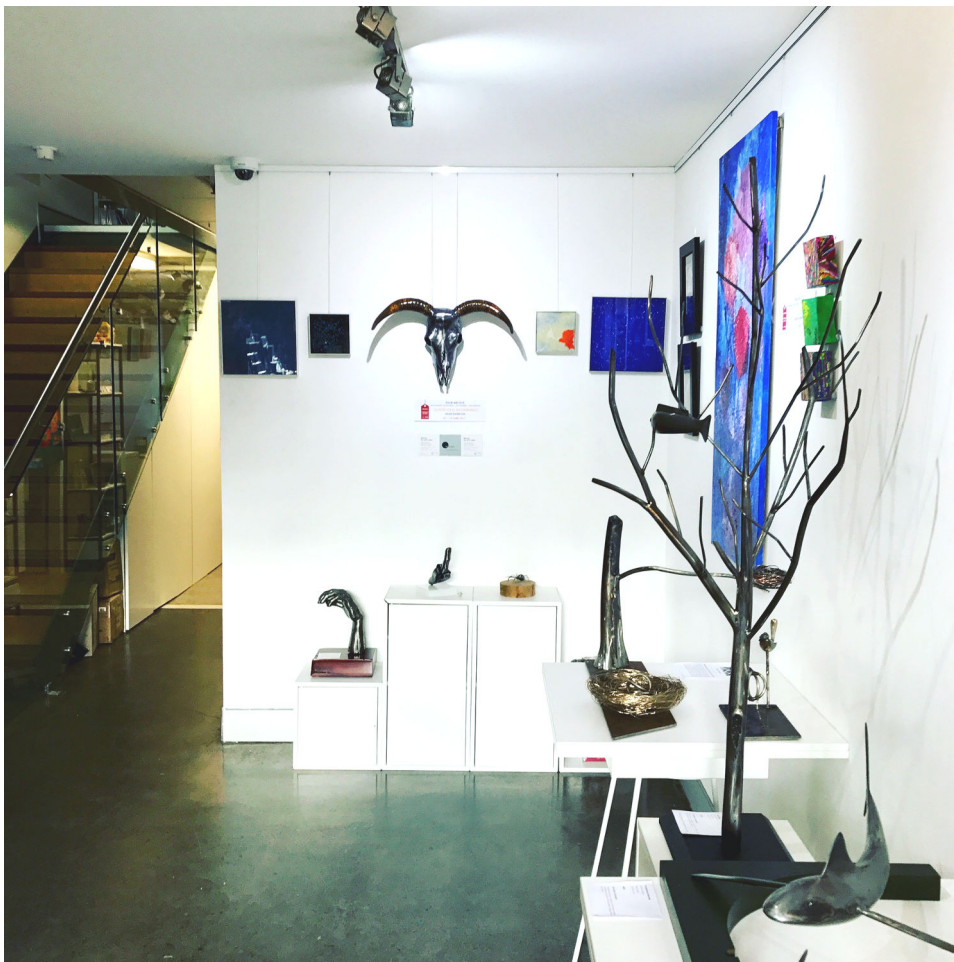
Our mission statements are:

To create a platform to help artists launch their art careers.

To help artists to connect with established and emerging collectors.

To present an eclectic, diverse selection of art in our gallery and online gallery.

Come and visit ArtSHINE in the inner city village of Chippendale; Sydney's creative precinct. You'll find hundreds of paintings on display covering every style of art imaginable.



3 BLACKFRIARS STREET. CHIPPENDALE

PH: (02) 9698 9156 E:

GALLERY@ARTSHINE.COM.AU

WWW.ARTSHINEGALLERY.COM

SUSPICIOUS BEGINNINGS | GROUP EXHIBITION