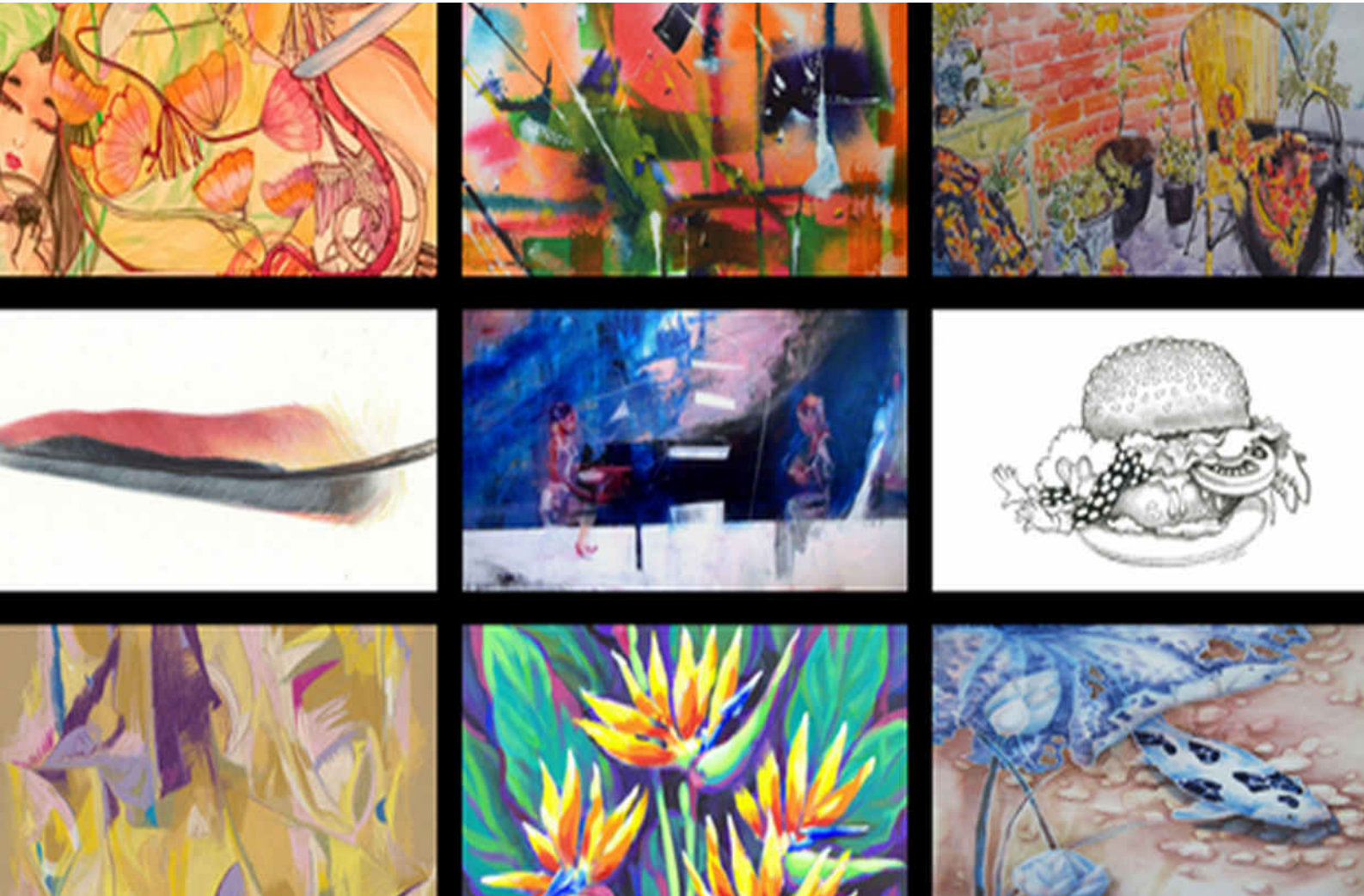


**NEW ARTWORKS BY  
NINE AMAZING ARTISTS**

**"ECLECTIC"**

**A GROUP EXHIBITION**



**EXHIBITION CATALOGUE**

**ART★SHINE**  
gallery

# "ECLECTIC"

## ABOUT THE EXHIBITION:

An exhibition showcasing uniqueness and quirkiness in different styles, techniques, and medium. An exhibition to challenge artists to define their own signature style, and the styles making them unique and different.

## Featuring artists:

Anthony Van Lam

David Hayden

Helen Dubrovich

Lamice Ali

Lino Pierre

Marie Widolf

Naomi Charles

Olga Kolesnik

Violetta Kurbanova

## Meet our Wine Sponsor







## ABOUT THE ARTIST

# ANTHONY VAN LAM

“The stylistic, expressive paintings of Australian artist Anthony Van Lam are as tranquil and magical as they are profound. Working in mix media on canvas or on paper, he paints from a range of subject matter to explore how lines, colours, organic shapes, flowers, animals and surface patterns intersect in unique ways to create form. With a background in fashion design, the artist has an excellent sense of composition and is able to place objects expertly in the picture plane, finding new meanings in familiar subject by isolating them and manipulating forms in terms of scale, colour, and shadow.

Known for his bold and colourful designs in fashion, Anthony's paintings reveal his true passion for flowers that are immediately

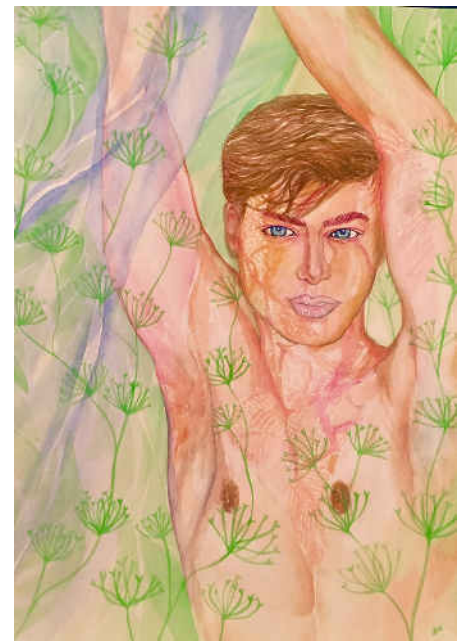
eye-catching. His current works capture exotic water lilies in a perfume lake. Elegantly depicted, they offer tranquility, calmness and allow you to leave your stresses behind when you look at one of his artworks.



**Dancers Warriors**  
Watercolour and pen  
Framed: 42 x 32 cm  
**\$150**



**Eleanor Orchid**  
Watercolour and pen  
Framed: 42 x 32 cm  
**\$150**



**Reflections**  
Watercolour  
Framed: 42 x 32 cm  
**\$150**





**Mostly Macky**

Watercolour and pen

Framed: 42 x 32 cm

**\$150**



**Living Within Paradise**

Watercolour

Framed: 42 x 32 cm

**\$150**



**Mel Mel Enlightenment**

Watercolour and pen

Framed: 42 x 32 cm

**\$150**



**One Purrfect Day!**

Watercolour and pen

Framed: 42 x 32 cm

**\$150**

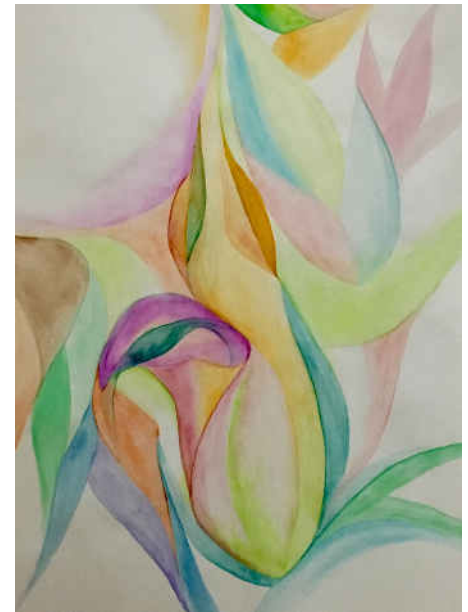


**Triple Peacock**

Watercolour and pencil

Framed: 42 x 32 cm

**\$150**



**Nesting In Paradise**

Watercolour

Framed: 42 x 32 cm

**\$120**



**Observing Serendipity**

Watercolour

Framed: 76 x 153 cm

**\$750**





## ABOUT THE ARTIST

# DAVID HAYDEN

As a painter of abstract art works David uses watercolour as my medium in an impasto style . With the use of colour, texture and glaze he creates a unique 3D effect . David describes his works are uplifting but contemplative.

Born in Glenelg Adelaide, South Australia David's first contact with the art world was at a very young age through his family. His mother was a water colourist specialising in still life and landscape.



**North lights #1**

Watercolour

Framed: 28 x 28 cm

**\$350**



**North lights #2**

Watercolour

Framed: 28 x 28 cm

**\$350**



**Rock Solid**

Watercolour

Framed: 28 x 28 cm

**\$350**



**Inland**

Watercolour

Framed: 28 x 28 cm

**\$350**



**Hard Rock**

Watercolour

Framed: 28 x 28 cm

**\$350**



**Bright Subdue**

Watercolour

Framed: 28 x 28 cm

**\$350**





## ABOUT THE ARTIST

# HELEN DUBROVICH

Helen's artworks cover not only a number of mediums such as watercolour, acrylic, pastel and pencil but her artwork encompasses a number of styles but even then her artwork and style are recognisable through her joyous use of colour, exuberance, texture and detail.

In this group show "Eclectic" Helen decided to show a range of her watercolours, although she often works in other mediums. The title of the show covers perfectly the range of Helen's work from detailed paintings, to a bit of fantasy to semi abstract landscapes.

Her feeling for illustrating her works often comes across as a story in it's own right. Her paintings have a magical quality and the viewer often feels like they can step into her paintings and share her special magic.



**Sunset Near Sofala**

Watercolour on Arches paper 300 gsm  
Framed: 57 x 74 cm  
**\$850**



**Dusk Near Sofala**

Watercolour on Arches paper 300 gsm  
Framed: 57 x 74 cm  
**\$850**



**Welcome TO My World**

Watercolour on Arches 300 gsm with silver leaf  
Framed: 82 x 66 cm  
**\$750**



**Afternoon in Cronulla**

Watercolour on Arches 300 gsm  
Framed: 73 x 54 cm  
**\$750**



**My Balcony**

Watercolour on Yupo paper  
Framed: 52 x 62cm  
**\$650**



## ABOUT THE ARTIST LAMICE ALI

Lamice is a lover of traditional media in all its forms. She adores the feel of charcoal and the weight of good paper and getting her hands messy from ink and paint (which inevitably means a smudged artwork!). She's constantly trying new techniques and new materials. Lamice is an Environmental Scientist, and her training and education in the ecological field contributes significantly to her work.



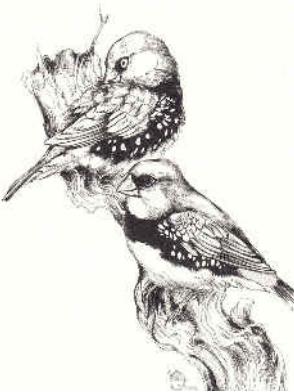
**Anima Plumarum 17 - Princess Parrot R**  
Water Paint  
Framed: 30 x 36 cm  
**\$280**



**The Raven's Claim**  
Graphite and charcoal  
Framed: 27 x 36 cm  
**\$385**



**The Happy Gallah**  
Mixed Media  
Framed: 20 x 16 cm  
**\$170**



**Diamond Firetail**  
Ink  
Framed: 16 x 20 cm  
**\$265**



**Blue Wings Silver Strings**  
Water paint & silver ink  
Framed: 12 x 12 cm  
**\$150**



**Study - Fairy Wren**  
Graphite and colour pencil  
Framed: 43 x 36cm  
**\$385**



**Yellow-tufted Honeyeater**  
Ink Study  
Framed: 16 x 20 cm  
**\$265**



**New Neighbours**  
Mixed Media on Woof Panel  
Framed: 35 x 40 cm  
**\$2000**



**The Happy Galah**  
Mixed Media  
Framed: 16 x 20 cm  
**\$110**





**Grey-crowned Babbler**

Ink study

Framed: 16 x 20 cm

**\$285**



**Grey-crowned Babbler**

Ink study

Framed: 16 x 20 cm

**\$285**



**Study - New Holland Honeyeater**

Graphite and colour pencil

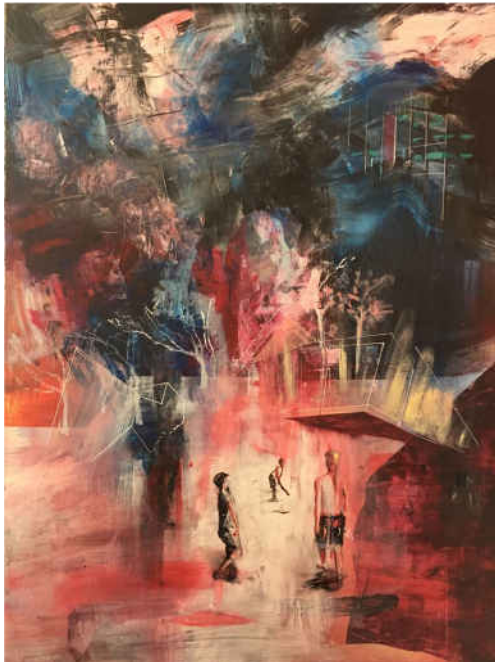
Framed: 40 x 36 cm

**\$385**



## ABOUT THE ARTIST LINO PIERRE

I explore issues that is of current times affecting the inhabitant of a globalized space and create images that can speak to the audience in an unsettling or even disturbing way. In the most varied ways, the whole examination contribute also to a cinematic like composition of my image drawing a lot of instances of daily media attention of contemporary life.



**A backyard game**

Mixed media oil acrylic ink on canvas

110 x 80 cm

**\$700**



**Exodus**

**(Limited Edition Print 20)**

Giclée print over archival paper

Framed: 110 x 110 cm

**\$400**



**Dispute**

Mixed Media on Board

Framed: 50 x 75 cm

**\$450**

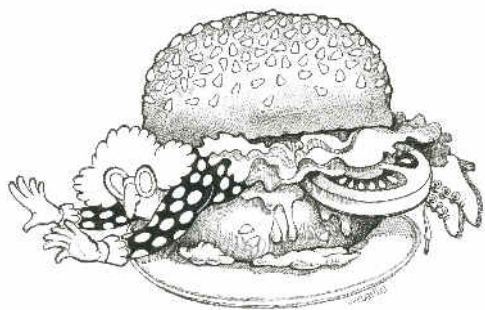


# ABOUT THE ARTIST

## MARIE WIDOLF

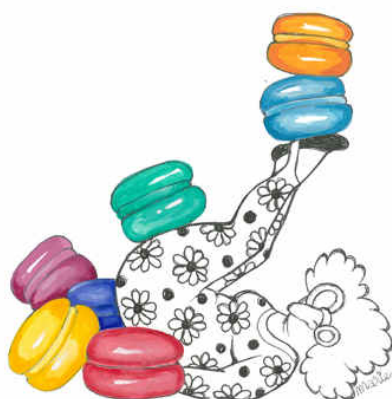


I am a Sydney based artist and the creator of the fictional cartoon-character known as Gertrude. As “a somewhat middle-aged gal”, she is trying to “figure it all out”: and HER way. Gertrude is my alter-ego and is modelled after my own disasters in my kitchen, my reluctance of following recipes, and yet my fascination with the world of food! With a tendency to day-dream and procrastinate, and fearing her kitchen is really out to get her, Gertrude secretly hopes to one day become a contestant on the TV-show MasterChef!



**Gertrude in a hamburger**

Pen & Ink on paper  
Framed: 40 x 30cm  
**\$250**



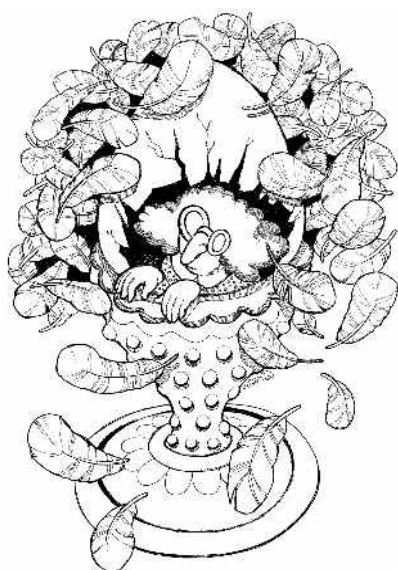
**Gertrude with Macarons**

Pen & Ink and Gouache on paper  
Framed: 31 x 28 cm  
**\$180**



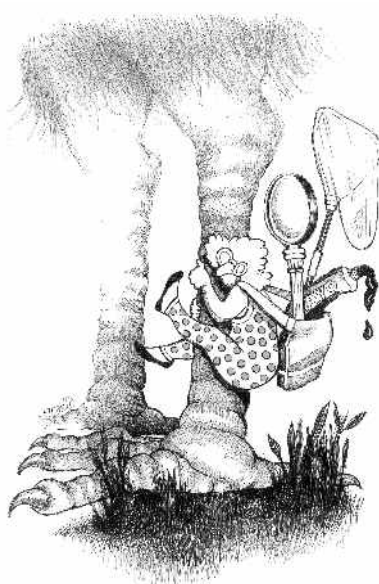
**Gertrude's Pantry**

Pen & Ink on paper  
Framed: 43 x 33 cm  
**\$150**



**Gertrude In The Egg Cup**

Pen & Ink on paper  
Framed: 40 x 30 cm  
**\$200**



**Jungle Gertrude**

Pen & Ink on paper  
Framed: 43 x 33cm  
**\$250**



**Pickled Gertrude**

Pen & Ink on paper  
Framed: 43 x 33 cm  
**\$200**



**Gertrude and the Rouge Grapes**

Pen & Ink on paper

Framed: 32 x 36cm

**\$180**

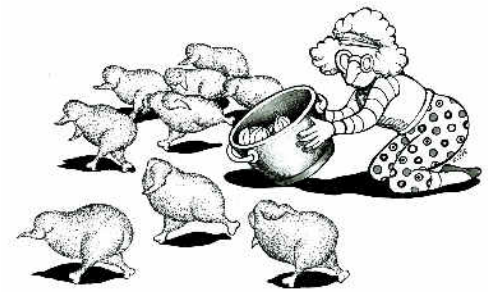


**Gertrude In The Nest Egg**

Pen & Ink on paper

Framed: 30 x 43 cm

**\$250**



**Gertrude's Runaway Chickens**

Pen & Ink on paper

Framed: 30 x 40 cm

**\$200**



## ABOUT THE ARTIST

# NAOMI CHARLES

My primary objective as an artist, is to achieve harmony through colour and express it most naturally in the abstract form. My mediums include colour pencil on paper, as well as oil or acrylic on canvas.



**GOLDEN**

Colour pencil on paper

Framed: 74 x 99 cm

**\$1200**



**BLUE**

Colour pencil on paper

Framed: 69 x 90 cm

**\$1100**



**Pink**

Oil on canvas

Framed: 33x 63m

**\$850**



**Mustard**

Oil on canvas

Framed: 43 x 33cm

**\$850**

**- ECLECTIC-**





## ABOUT THE ARTIST

# OLGA KOLESNIK

My still lives from the Tea Time Series are telling stories about people. Although people stay out of the picture, their presence is felt. It was them who set up a table, baked a cake, put flowers in a vase and poured tea into a cup. They can be back any minute. It's about someone's tea party, a birthday celebration or a get-together with a close friend.



**Tea For Two**  
Acrylic on canvas  
76 x 38 cm  
**\$1050**



**High Tea**  
Acrylic on canvas  
76 x 38 cm  
**\$1050**



**Earl Grey and Pavlova**  
Acrylic on canvas  
76 x 38 cm  
**\$1050**



**Orange Pekoe, Cupcakes and Lavender**  
Acrylic on canvas  
76 x 38 cm  
**\$1050**



**French Vanilla & Forest Cake**  
Acrylic on canvas  
76 x 38 cm  
**\$1050**



**Watching you watching me**  
Acrylic on canvas  
76 x 38 cm  
**\$950**



**In search of Paradise**  
Acrylic on canvas  
71x 51 cm  
**\$1200**



**Happy Colours of Summer. Sunflowers**  
Acrylic on canvas  
76 x 51 cm  
**\$1100**





## ABOUT THE ARTIST

# VIOLETTA KURBANOVA

When I first started painting on silk and I saw how the colour flowed into the fabric, the exciting possibilities of the medium inspired me. I tried out various styles and subjects finding that colourful flowers, birds and under water world best suited my approach to silk painting.

I love that painting on silk is such an interactive process, filled with life. It's a dance between the artist, the liquid, transparent colours spreading across the surface, and the silk itself, which influences how the dyes react with it. I love the way the already luminescent silk develops extra sparkle when it is dyed. As they dry, the dyes create spontaneous and unpredictable, organic textural effects, making each piece a unique surprise. What's not to love?



**Koi (Part 1 of diptych)**

Acrylic on silk

100 x 65 cm

**\$1450**



**Koi (Part 2 of diptych)**

Acrylic on silk

100 x 65 cm

**\$1450**



**White Iris**

Acrylic on silk

100 x 65 cm

**\$1450**



**Pink Peony**

Acrylic on silk

100 x 65 cm

**\$1450**



**Assorted Silk Scarves**

5 Designs:

Geisha, Orchids, Horse, Rose, and Song

90 x 90 cm

**\$150 each**





## 2017 Art Exhibition Announcement!

### Congrats to the 2017 ArtSHINE Launch Pad Exhibitors

This year the ArtSHINE gallery exhibition season is even bigger, which means there is more of everything, for everyone! We can't wait for you to check out the full program!

Here are our 2017 exhibitors:

#### **February**

Different Words – A joint exhibition

Artists: Girija Kulkarni & James Mathurin

#### **March**

Eclectic – A Goup exhibition featuring 9 Artists:

Anthony Van Lam, David Hayden, Helen Dubrovich, Lamice Ali, Lino Pierre, Marie Widolf, Naomi Charles, Olga Kolesnik, Violetta Kurbanova

#### **April**

Big Country – A Solo Show

Artist: John Klein

#### **May**

Oztromony – A Solo Show Artist: Ed Hurst

Capturing Koi – A Solo Show Artist: Julie Ellitt

Bashang In Colour – A Solo Show Artist: Jim Chen

#### **June**

Suspicious Beginings – A Group show featuring 4 artists:

Adam Grahram, David Howell, Julie Pozdeev, Olga Nowicka

#### **August**

A Solo Show

Artist: Anthony Van Lam

#### **September**

Textura Urbanus – A Solo Show

Artist: Graeme Endean

#### **October**

A Solo Show

Artist: Kristine Ballard

#### **November**

The Sydney Comics Guild – A Group Show

Artists: 10 Artists

#### **December**

Magic Garden – A Solo Show

Artist: Gabby Malpas



## Business Coaching for Artists

A specialised coaching program for artists, artisans, crafters, designers, fashion labels, and all professionals working in the creative communities.

Working extensively with clients, and also drawing upon the knowledge of experienced industry professionals, ArtSHINE has worked to create and develop the coaching programs as part of our commitment to support the development of business and entrepreneurial skills of Australian artists, artisans, and associated creative communities.

Attention All Artists, Designers, Crafters and creative professionals

Working full time but wanting to make the transition to make a living for yourself?

\* Thinking about painting full time as an artist?

\* Ready to take that next step in your graphic design business?

\* Need to create financial success so that you can pursue your real passion?

ArtSHINE is here to provide you with all the skills, experience, and support you need to make your artistic dreams reality.

Do what you love to do...honour your creative spirit... and let it "Shine"!

ArtSHINE is all about defining, creating and pursuing your authentic life path.

***MAKE TOMORROW TODAY!***



# ART\*SHINE industries

## Launch Pad + Accelerator

We're Australia's Creative Industries Enterprise Acceleration Platform + Launch Pad.

We identify, advance, fund, and aid the development of commercially minded and innovative Creative Industries Professionals.

ArtSHINE industries incorporates CoSydney CoWorking, the ArtSHINE Gallery, the ArtSHINE Agency, and the ArtSHINE Coffee House.



*Money for art's sake. Interest  
free loans to buy art.  
Take your art home and pay  
for it later.*



# ART\*SHINE gallery

ArtSHINE Gallery is a platform dedicated to emerging and established artists. We work with artists, showcase their talents and help them connect with established and emerging collectors.

**Our mission statements are:**

*To create a platform to help artists launch their art careers.*

*To help artists to connect with established and emerging collectors.*

*To present an eclectic, diverse selection of art in our gallery and online gallery.*

Come and visit our gallery in the inner city village of Chippendale; Sydney's creative precinct. You'll find hundreds of paintings on display covering every style of art imaginable.



- ECLECTIC -